



**ALASKA DIVISION OF HOMELAND  
SECURITY & EMERGENCY MANAGEMENT**  
**SITUATION REPORT**  
**25-007• January 7, 2025**



Toll-Free 1.800.478.2337

Anchorage Area 907.428.7000

SEOC 907.428.7100

<p><b><u>SEOC Preparedness Level</u></b> Level 1-Routine Operations</p>	<p><a href="http://ready.alaska.gov">http://ready.alaska.gov</a></p>	<p><b><u>National Terrorism Advisory System:</u></b>  <a href="#">Read the NTAS Bulletin here</a></p>
<p><b><u>Maritime Security (MARSEC)</u></b> Level:1- Minimum Appropriate Security Measures</p>	<p><b>WHO Novel Coronavirus Pandemic (COVID-19):</b> <a href="#">2019 Novel Coronavirus</a></p>	<p><b><u>Alaska Military Installation Force Protection</u></b>  <b><u>Level:</u></b> FPCON Bravo</p>

(Significant changes from previous situation reports are red.)

**Significant Issues:**

None

**Department of Health (DOH):**

For current information, see: <https://health.alaska.gov/dph/Pages/default.aspx>  
<https://health.alaska.gov/dph/Emergency/Pages/prepared/default.aspx>

**NTAS Bulletin:**

The U.S. Department of Homeland Security issued an updated National Terrorism Advisory Bulletin on May 24, 2023. The current and expired bulletins can be viewed at the below link.  
<https://www.dhs.gov/national-terrorism-advisory-system>

**Travel Alerts and Conditions:**

**Klondike Hwy closed overnight.**

For current driving conditions, dial 511 or visit: <https://511.alaska.gov/>

**Barry Arm Landslide / Tsunami Risk:**

For the latest information on the Barry Arm Landslide and Tsunami risk, click here:  
<https://dggs.alaska.gov/hazards/barry-arm-landslide.html>

**Earthquakes:**

United States Geological Service (USGS) Earthquake Information: <http://earthquake.usgs.gov/>  
National Tsunami Warning Center: <http://tsunami.gov/>

**Alaska Volcanoes:**

**Great Sitkin Alert Level: Watch** and Aviation Color Code: **Orange**

**Mt. Spurr Alert Level: Advisory** and Aviation Color Code: **Yellow**

For Alaska Volcano updates, go to: <https://www.avo.alaska.edu/>

### Air Quality Index (AQI) Advisories:

For the most up-to-date Air Quality Index Advisories:

<http://dec.alaska.gov/Applications/Air/airtoolsweb/Home/Index>

### Spills of Oil and Hazardous Substances:

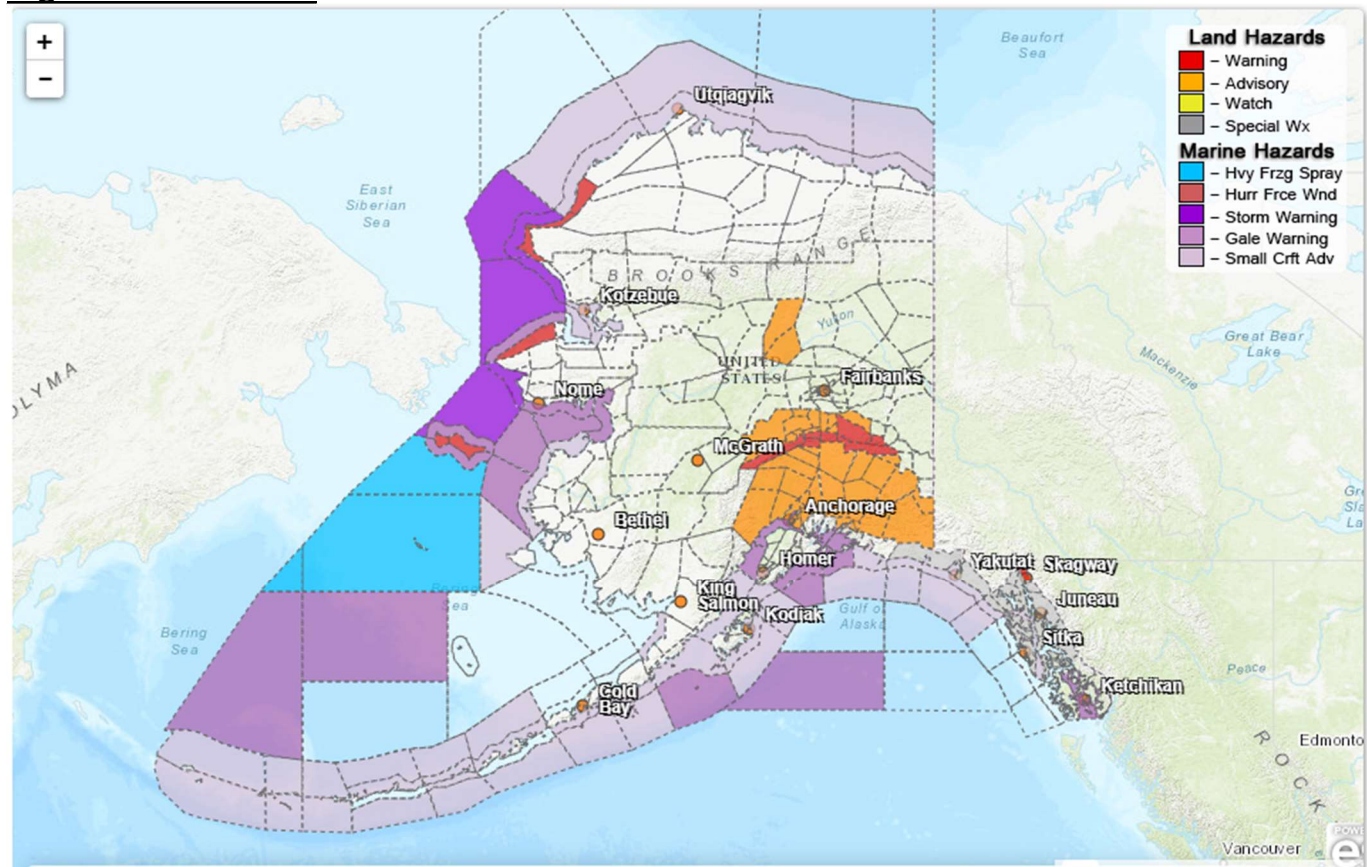
The Alaska Division of Environmental Conservation (ADEC) Spill Prevention and Response page is located at: <https://dec.alaska.gov/spar/>

### Alaska Cyber Security Information:

State Employees may sign up for cybersecurity notifications and alerts at:

<https://oit.alaska.gov/security>

### Significant Weather:



#### **Winter Storm Warning:**

**Municipality of Skagway** – in effect until 9AM today.

**Southern Denali Borough, Eastern Alaska Range South of Trims Camp** - in effect until 3PM Wednesday afternoon.

#### **Winter Weather Advisory:**

**Dalton Hwy Summits** – in effect until 9AM this morning.

**Copper River Basin (west of Glennallen as well as toward Thompson Pass), Anchorage, Matanuska Valley, Northeast Prince William Sound** - in effect until 10AM today.

**Northern Denali Borough** – in effect until Noon today.

**Susitna Valley** – in effect until 4PM this afternoon.

#### **High Wind Warning:**

**St. Lawrence Island, Shishmaref** - in effect until 9PM this evening.

**Western Arctic Coast** – in effect until 3AM Wednesday morning.

**Eastern Alaska Range North of Trims Camp** - in effect until 3PM Wednesday.

